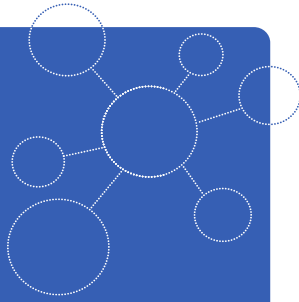


MADE IN GERMANY



## ANAREX (-DS) 2.0

Multigas Analyzer

#2-S21-S22-S43-S23-E50

CO<sub>2</sub> 20% / CO 1000ppm / SO<sub>2</sub> 1000ppm /

NO 2000ppm / O<sub>2</sub> 25%

### Product features:

- High stable measuring performance
- Easy operation via touch screen
- Simple sensor calibration
- Standard 19 inch 3HE rack
- Analog and digital output
- Low maintenance and high durability
- High selectivity and measuring accuracy
- Long-term stability and very low drift
- Low detection limit and T90 time



The **ANAREX** product family impresses with its stable high-precision measuring performance, intuitive operation and easy calibration. Designed as a 19-inch multi-gas analyzer, the **ANAREX** is available even with two gas streams as **ANAREX-DS** (double stream) as two in one solution. **ANAREX** gas analyzers are primarily based on the NDIR sensors of the **FLOW<sup>EVO</sup>** and **SILAREX** series, however, they can be supplemented with several technologies like NDUV, TCD, TDLS, EC,PID, paramagnetic and photoacoustic as well as several other.

#### smartGAS Mikrosensorik GmbH

Huenderstrasse 1, 74080 Heilbronn, Germany

T +49 (0) 7131 797553-0

[sales@smartgas.eu](mailto:sales@smartgas.eu) [www.smartgas.eu](http://www.smartgas.eu)

#### smartGAS Sensor Technology Co., Ltd

Building 16, No. 59 Jiangnan Rd. CEDZ Changshu, Jiangsu, China

T +86 (0) 512-83380880

[info@smartgas-cn.com](mailto:info@smartgas-cn.com) [www.smartgas-cn.com](http://www.smartgas-cn.com)

## General features

Release date: 31.Dec 2024

### Multi Gas Analyzer

Gas Streams:	1
Gas supply:	Flow Mode 1/8" NPTF
Mounting dimensions:	Standard 19" 3 U
User Interface:	Touch panel, 5.6" TFT
Gas Inlet Flow	0.4 .. 0.8 L/min (Flow fluctuations ≤0.02 L/min)
Inlet Gas Temp.	5 .. 35 °C
Inlet Gas Pressure	116 kPa (max)
Moisture in Gas	inlet gas dew point: 5 °C ±0.1 °C
Dust in gas flow	100 µg/m <sup>3</sup> , ≤ 1µm
Warm-up time (full specification):	< 30 minutes
Flow Meter	1
Internal Gas Tubing	PU ( certified )
Zero Calibration Gas	Stream 1 : Nitrogen Stream 2 : -/-
Span Calibration Gas Background	Stream 1 : Nitrogen Stream 2 : -/-

## Measuring\*

Response time (t90)**:	< 30 s							
Gas	Technology	Range	Linearity Error	LDL (3 σ)	Display	C.C**	P.C***	
1 CO <sub>2</sub>	NDIR (SX2)	0 .. 20 Vol.%	±1 %[FS]	<±0.5 %[FS]	XX.x	-/-	yes	
CO <sub>2</sub>	NDIR (SX1)	0 .. 25 Vol.%	±1 %[FS]	<±0.5 %[FS]	internal	-/-	yes	Note <sup>1</sup>
2 CO	NDIR (SX2)	0 .. 1000 ppm	±1 %[FS]	<±0.5 %[FS]	XXXX	1	yes	
3 SO <sub>2</sub>	NDIR (SX2)	0 .. 1000 ppm	±1.5 %[FS]	<±1 %[FS]	XXXX	1	yes	
4 NO	NDIR	0 .. 2000 ppm	±1.5 %[FS]	<±1 %[FS]	XXXX	1,2	yes	
5 O <sub>2</sub>	EC	0 .. 25 Vol.%	±1.5 %[FS]	<±1 %[FS]	XX.x	-/-	-/-	

Note<sup>1</sup> : Internal Channel only for cross compensation. Calibration automatically by Channel 1

## Electrical parameters

Supply voltage:	198~242V AC, 50/60 Hz
Power Connector	EN60320 C1
Case Protection Level	IP42 (EN60529)
Package Dimensions	577mm*512mm*255mm

## Climatic conditions

Operating temperature:	5 °C .. 45 °C
Storage temperature:	-20 .. + 60 °C
Air pressure:	760 .. 1160 hPa
Ambient humidity:	0 .. 95 % relative humidity (not condensing)

## Accessories to be ordered separately :

Power Cable:	Refer to the requirement of country
Gas Connections (one Set : Inlet/Outlet)	Stainless Steel: 1/8" 1/4" 10mm 6mm   Rubber Tube: 6mm   PTFE: 6mm

\* Typical values related to 1013 hPa, Ta = 22 °C, flow = 0.7 l / min for dry (not condensing) and clean sample gas.

Stated values exclude calibration gas tolerance.

\*\* C.C : Internal Cross compensated by other gas

\*\*\* P.C : Pressure compensated

All rights reserved. Any logos and/or product names are trademarks of smartGAS. The reproduction, transfer, distribution or storage of information contained in this brochure in any form without the prior written consent of smartGAS is strictly prohibited. All specifications – technical included – are subject to change without notice. Depending on the application, the target gas and the measurement range the technical data may differ. No liability is accepted for any consequential losses, injury or damage resulting from the use of this document or from any omissions or errors herein. The data is given for guidance only. It does not constitute a specification or an offer for sale.

For more information, please visit [www.smartgas.eu](http://www.smartgas.eu) or contact us at [sales@smartgas.eu](mailto:sales@smartgas.eu)

Please consult smartGAS sales for parts specified with other temperature and measurement ranges. At first initiation and depending on application and ambient conditions recalibration is recommended.

Recurring cycles of recalibration are recommended.