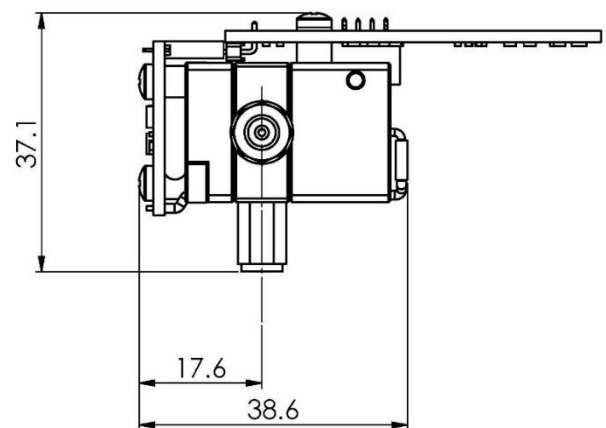
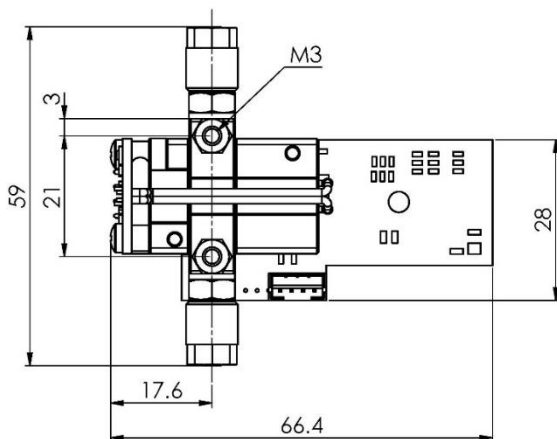
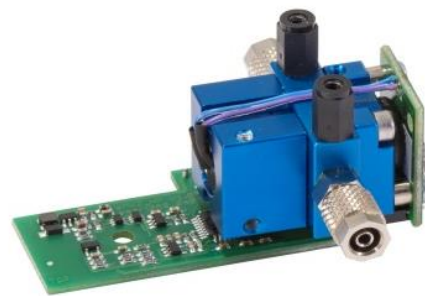




**FLOW<sup>EVO</sup>**

Infrared gas sensor SF6 // Sulfur hexafluoride // 100 Vol.-%  
smartGAS item number: F3-602108-05000

- Pre calibrated
- Compact design
- 3/5 mm gas line connectors
- 3.3 - 6 V DC supply voltage
- Modbus ASCII or RTU
- Status indication by LED
- Low drift



**APPLICATION EXAMPLE**

FIX AND PORTABLE SF6 LEAKAGE DETECTION // TRACER GAS MEASUREMENT // SF6 ANALYSING //  
HIGH VOLTAGE CABLES // HIGH VOLTAGE TRANSFORMERS

<b>F3-602108-05000</b>	<b>SF6 // Sulfur hexafluoride // 100 Vol.-%</b>	
<b>General features</b>		
Measurement principle:	Non Dispersive Infra-Red (NDIR), dual wavelength	
Measurement range:	0 ... 100 Vol.-% Full Scale (FS)	
Gas supply:	by flow (nearly atmospheric pressure)	
Flow rate:	0.02 ... 0.2 l / min	
Mounting dimensions:	70 mm x 60 mm x 40 mm (L x W x H)	
Warm-up time:	< 2 minutes (start up time)	
	< 30 minutes (full specification)	
<b>Measuring response*</b>		
Digital resolution:	0.01 Vol.-%	
Response time @ 0.1 l / min**:	<i>Standard:</i>	<i>Fast:</i>
t <sub>90</sub> (10 to 90 % FS):	≤ 12.7 s	≤ 1.6 s
t <sub>on</sub> (0 to 90 % FS):	≤ 20.6 s	≤ 7.2 s
Detection limit (3 σ):	≤ 0.3 Vol.-%	≤ 1.2 Vol.-%
Repeatability:	≤ ± 0.5 Vol.-%	
Linearity error (straight line deviation):	≤ ± 1.4 Vol.-%	
Long term stability (zero):	≤ ± 5.5 Vol.-% over 1000 h period	
Long term stability (span):	≤ ± 7.0 Vol.-% over 1000 h period	
<b>Influence of T, P, flow rate, other*</b>		
Temp. dependence (zero):	≤ ± 0.1 Vol.-% per °C	
Temp. dependence (span):	≤ ± 0.15 Vol.-% per °C	
Pressure dependence:	+ 0.100 % of actual reading / hPa	
Flow rate dependence:	≤ ± 0.1 Vol.-% per 0.1 l / min	
Cross sensitivity (zero) other gases:	consult manufacturer	
<b>Electrical inputs and outputs</b>		
Supply voltage:	3.3 V ... 6.0 VDC	
Supply current (peak):	< 400 mA @ 3.3 V, < 240 mA @ 5.0 V	
Inrush current:	< 600 mA	
Average power consumption:	< 800 mW	
Digital output signal:	Modbus ASCII / RTU via UART, autobaud, autoframe	
Calibration:	zero and span by SW	
<b>Climatic conditions</b>		
Operating temperature:	0 ... + 50 °C	
Storage temperature:	-20 ... + 60 °C	
Air pressure:	800 ... 1150 hPa	
Ambient humidity:	0 ... 95 % relative humidity (not condensing)	
* Typical values related to 1013 hPa, T <sub>a</sub> = 22 °C, flow = 0.7 l / min for dry (not condensing) and clean sample gas. Stated values exclude calibration gas tolerance.		
** Adjustable only via smartGAS Calibration-Tool SW.		

All rights reserved. Any logos and/or product names are trademarks of smartGAS. The reproduction, transfer, distribution or storage of information contained in this brochure in any form without the prior written consent of smartGAS is strictly prohibited. All specifications – technical included – are subject to change without notice. Depending on the application, the target gas and the measurement range the technical data may differ. No liability is accepted for any consequential losses, injury or damage resulting from the use of this document or from any omissions or errors herein. The data is given for guidance only. It does not constitute a specification or an offer for sale.

For more information, please visit [www.smartgas.eu](http://www.smartgas.eu) or contact us at [sales@smartgas.eu](mailto:sales@smartgas.eu)

Please consult smartGAS sales for parts specified with other temperature and measurement ranges. At first initiation and depending on application and ambient conditions recalibration is recommended. Recurring cycles of recalibration are recommended.