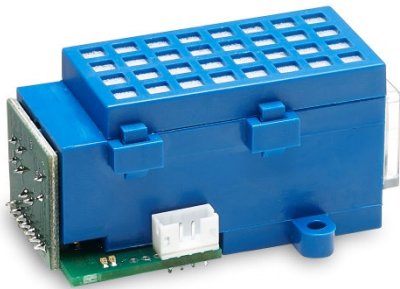


## BASIC<sup>EVO</sup>

Infrared gas sensor CO<sub>2</sub> // Carbone Dioxide // 5000 ppm  
smartGAS item Number: B3-212505-00000



- Pre calibrated
- Gas entry by diffusion
- 3.3 - 6 V DC supply voltage
- Modbus ASCII or RTU
- Status indication by LED

Non Dispersive Infrared (NDIR) gas sensor for ambient air monitoring using dual wavelength technology.

The BASIC<sup>EVO</sup> CO<sub>2</sub> sensor can easily be integrated into OEM systems, where long term stability, repeatability and reliable performance are required. It can be utilised for ambient air monitoring in the field of air conditioning devices and workplace security and for various areas of scientific research. Special build-in solutions to provide IP54 protection and easy field gas-calibration are available as option.

Modbus ASCII or RTU data communication offers a variety of options to connect the BASIC<sup>EVO</sup> gas sensor to a controller.

### APPLICATION EXAMPLE

HOTEL AIR CONDITIONING  
WORKPLACE SECURITY  
OFFICE BUILDINGS  
INDUSTRIAL REFRIGERATION  
RESEARCH

**EVO**  
**BASIC**

 Infrared gas sensor CO<sub>2</sub> // Carbone Dioxide // 5000 ppm  
 smartGAS item number: B3-212505-00000

**General features**

Measurement principle:	Non Dispersive Infra-Red (NDIR), dual wavelength
Measurement range:	0 .. 5000 ppm Full Scale (FS)
Gas supply:	by diffusion (atmospheric pressure)
Dimensions:	62 mm x 37 mm x 30 mm (L x W x H)
Warm-up time:	< 2 minutes (start up time) < 11 minutes (fade in finished) < 30 minutes (full specification)

**Measuring response\***

Response time (t <sub>90</sub> ):	appr. 60 s
Digital resolution (@ zero):	1 ppm
Detection limit (3 σ):	≤ 35 ppm
Repeatability:	≤ ± 25 ppm
Linearity error (straight line deviation):	≤ ± 100 ppm
Long term stability (span):	≤ ± 120 ppm over 12 month period
Long term stability (zero):	≤ ± 100 ppm over 12 month period

**Influence of T and P\***

Temp. dependence (zero):	≤ ± 7 ppm per °C
Temp. dependence (span):	≤ ± 15 ppm per °C
Pressure dependence:	± 0.156 % of measurement value / hPa

**Electrical inputs and outputs**

Supply voltage:	3.3 V .. 6.0 V DC
Supply current (peak):	< 500 mA @ 3.3 V, < 240 mA @ 6.0 V
Inrush current:	< 1000 mA
Average power consumption:	< 900 mW
Digital output signal:	Modbus ASCII / RTU via UART, autobaud, autoframe
Calibration:	zero and span by SW

**Climatic conditions**

Operating temperature:	-10 .. + 40 °C
Storage temperature:	-20 .. + 60 °C
Air pressure:	800 .. 1150 hPa
Ambient humidity:	0 .. 95 % relative humidity (not condensing)

\* Typical values related to 1013 hPa and 22 °C for dry (not condensing) and clean sample gas.  
 Stated values exclude calibration gas tolerance.

All rights reserved. Any logos and/or product names are trademarks of smartGAS. The reproduction, transfer, distribution or storage of information contained in this brochure in any form without the prior written consent of smartGAS is strictly prohibited. All specifications – technical included – are subject to change without notice. Depending on the application, the target gas and the measurement range the technical data may differ. No liability is accepted for any consequential losses, injury or damage resulting from the use of this document or from any omissions or errors herein. The data is given for guidance only. It does not constitute a specification or an offer for sale.

For more information, please visit [www.smartGAS.eu](http://www.smartGAS.eu) or contact us at [sales@smartgas.eu](mailto:sales@smartgas.eu)

Please consult smartGAS sales for parts specified with other temperature and measurement ranges.

At first initiation and depending on application and ambient conditions recalibration is recommended. Recurring cycles of recalibration are recommended.